

ACCESS & POWER INTE
POWER INTEGRATIO
ACCESS & POWER
SS & POWER INTEGR
POWER INTEGRATION
ER INTEGRATION AC
RATATION ACCESS & PO
ACCESS & POWER I



Powered by  Altronix®

Pre-configured kits to streamline access control design & deployment



Altronix®
TROVE™

Easily combine Altronix power and accessories with Brivo -
Reducing installation and labor costs!



- Trove streamlines access control design and deployment, increasing profits and ROI.
- Removable backplanes allow you to configure and test prior to on-site installation.
- Trove enclosures are available in different sizes and configurations to meet any project scope.
- **Pre-configured kits are available with power and distribution.**
- Optional LINQ™ Networked Power Management Technology allows you remotely monitor, control and report power/diagnostics, streamlining service and maintenance operations by leveraging the network.
- Trove System Design tool simplifies Brivo Trove kit selection and design: www.altronix.com/system_design_tools/trove

Why Altronix...

- Lifetime Warranty – Altronix power supplies and sub-assemblies.
- NDAA & TAA compliant.
- Award winning customer service and technical support.
- Dedicated sales team to assist in design and layout.

Ronnie Pennington
*Director of Sales
for the Americas*
ronniep@altronix.com

Steve Stettner
Northeast U.S. Sales
sstettner@altronix.com

Stephen Oliva
*OEM Partner Development/
Western U.S. Sales*
steveo@altronix.com

Altronix Model	Description	System Capacity	Compatible BRIVO Models
<i>Trove 1 Series - Accommodates Altronix Power and Distribution with Controllers</i>			
TROVE1BV1	Enclosure + Backplane	4-Doors	ACS6000-MBE, ACS6100-DB, B-ACS6100-IO
TBV1	Backplane only		
<i>Trove 2 Series - Accommodates Altronix Power and Distribution with Controllers</i>			
TROVE2BV2	Enclosure + Backplane	8-Doors	ACS6000-MBE, ACS6100-DB, B-ACS6100-IO
TBV2	Backplane only		
<i>Trove 3 Series - Accommodates Altronix Power and Distribution with Controllers</i>			
TROVE3BV3	Enclosure + Backplane	16-Doors	ACS6000-MBE, ACS6100-DB, B-ACS6100-IO
TBV3	Backplane only		

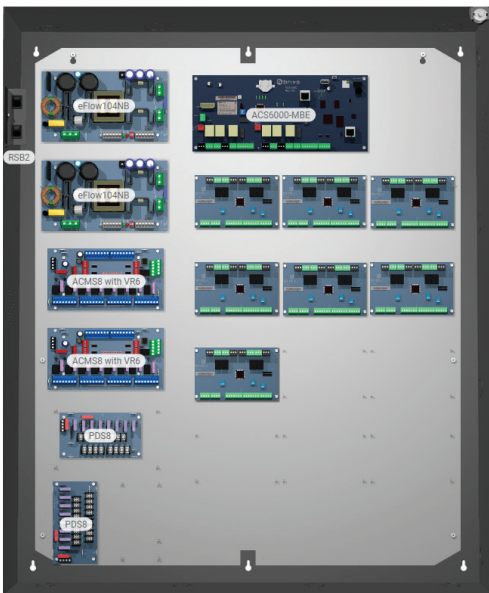
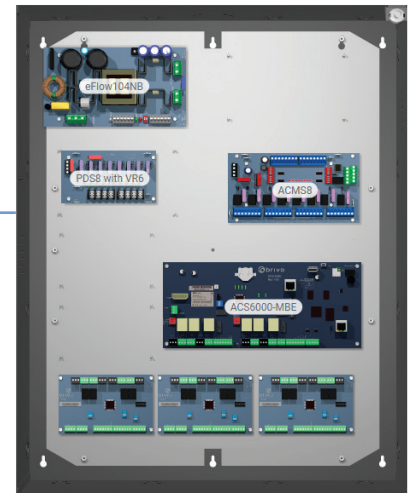


TROVE1

- Convenient knockout configuration:
 - One (1) single knockout 2.415" (2" Conduit).
 - Nine (9) double knockouts 1.362" (1" Conduit) / 1.115" (3/4" Conduit).
 - Accommodates two (2) 12VDC/7AH batteries
- Dimensions: 18" H x 14.5" W x 4.625" D

TROVE2

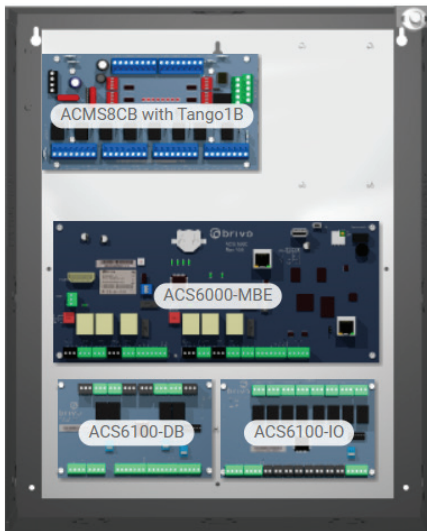
- Convenient knockout configuration:
 - One (1) single knockout 2.415" (2" Conduit).
 - Sixteen (16) double knockouts 1.362" (1" Conduit) / 1.115" (3/4" Conduit).
 - Accommodates two (2) 12VDC/12AH batteries
- Dimensions: 27.25" H x 21.75" W x 6.5" D



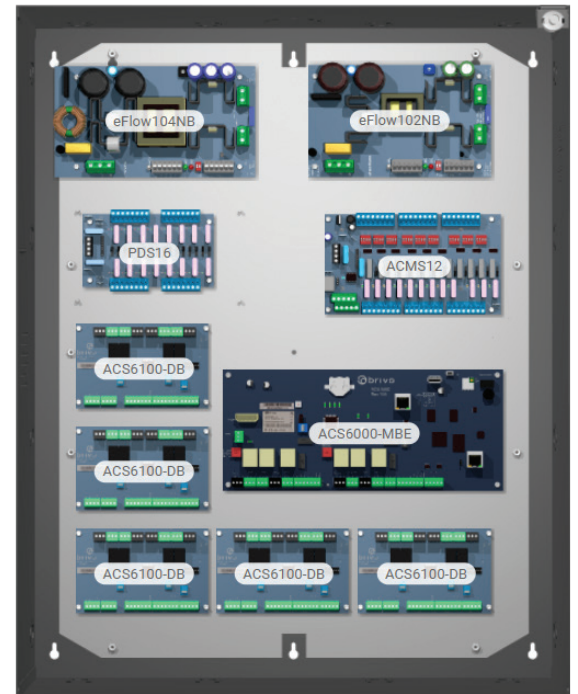
TROVE3

- Convenient knockout configuration:
 - One (1) single knockout 2.415" (2" Conduit)
 - Two (2) double knockout 1.948" (1.5" Conduit) / 1.701" (1.25" Conduit)
 - Thirteen (13) double knockouts 1.362" (1" Conduit) / 1.115" (3/4" Conduit)
 - Accommodates four (4) 12VDC/12AH batteries
- Dimensions: 36.12" H x 30.12" W x 7.06" D

Altronix Model	Description	System Capacity	Compatible BRIVO Models	
<i>Trove 1 Series Pre-assembled Kits</i>				
T1BV3F4S	eFlow6NB, VR6, ACM4	4-Doors	ACS6000-MBE, ACS6100-DB, B-ACS6100-IO	
T1BV3F4SD	eFlow6NB, VR6, ACM4CB			
T1BVT4	Tango1B, ACMS8	6-Doors		
T1BVT4D	Tango1B, ACMS8CB			
<i>Trove 2 Series Pre-assembled Kits</i>				
T2BV7F8S	eFlow104NB, VR6, ACMS8, PDS8	8-Doors		ACS6000-MBE, ACS6100-DB, B-ACS6100-IO
T2BV7F8SD	eFlow104NB, VR6, ACMS8CB, PDS8CB			
T2BV77F8S	2-eFlow104NB, 2-VR6, ACMS8, PDS8			
T2BV77F8SD	2-eFlow104NB, 2-VR6, ACMS8CB, PDS8CB			
T2BV75F12S	eFlow104NB, eFlow102NB, ACMS12, PDS16	12-Doors		
T2BV75F12SD	eFlow104NB, eFlow102NB, ACMS12CB, PDS16CB			
T2BV77F12S	2-eFlow104NB, 2-VR6, ACMS12, PDS16			
T2BV77F12SD	2-eFlow104NB, 2-VR6, ACMS12, PDS16			
<i>220VAC units available upon request, add suffix "V" (T1BV3F4SV)</i>				



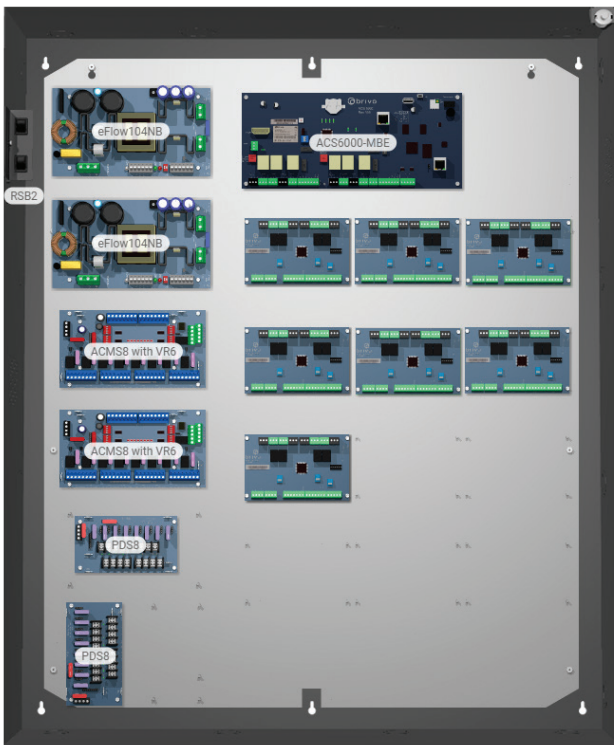
T1BVT4
6-Door PoE Driven Access System



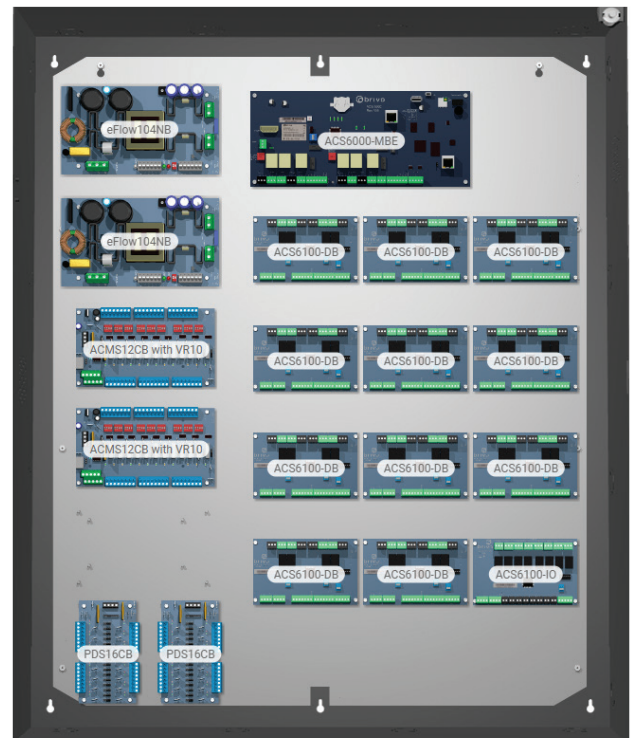
T2BV75F12S
12-Door Access System with Power

Altronix Model	Description	System Capacity	Compatible BRIVO Models
<i>Trove 3 Series Pre-assembled Kits</i>			
T3BV77F16S	2-eFlow104NB, 2-ACMS8, 2-VR6, 2-PDS8, RBS2	16-Doors	ACS6000-MBE, ACS6100-DB, B-ACS6100-IO
T3BV77F16SD	2-eFlow104NB, 2-ACMS8CB, 2-VR6, 2-PDS8CB, RBS2		
T3BV77F16SQ	2-eFlow104NB, 2-ACMS8, 2-VR6, 2-LINQ8PD, RBS2		
T3BV77F16SDQ	2-eFlow104NB, 2-ACMS8CB, 2-VR6, 2-LINQ8PDCB, RBS2		
T3BV77F24S	2-eFlow104NB, 2-ACMS12, 2-VR10, 2-PDS16, RBS2	24-Doors	
T3BV77F24SD	2-eFlow104NB, 2-ACMS12CB, 2-VR10, 2-PDS16CB, RBS2		

220VAC units available upon request, add suffix "V" (T3BV77F16SDV)



T3BV77F16S
16-Door Access System with Power



T3BV77F24SD
24-Door Access System with Power

Front view →

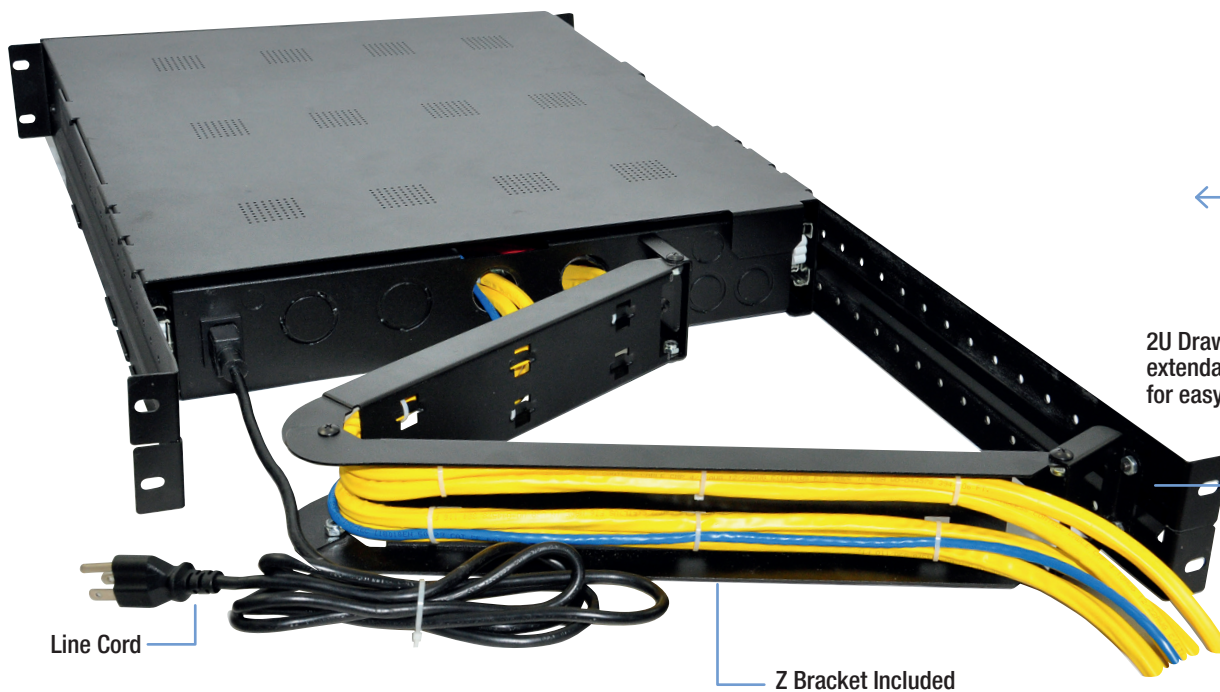


*Boards not included

Cam Lock

Power LEDs

← Rear view



Line Cord

Z Bracket Included

2U Drawer on
extendable rails
for easy access

Rack Access and Power Integration

Altronix Model	Description	System Capacity	Compatible BRIVO Models
<i>Brivo Trove 2R Series - Accommodates Altronix Power and Distribution with Controllers</i>			
T1RBV3F4	1-eFlow6NB, 1-ACMS8, 1-VR6	4-Doors	ACS6000-MBE, ACS6100-DB, B-ACS6100-IO
T1RBV3F4D	1-eFlow6NB, 1-ACMS8CB, 1-VR6		
<i>220VAC units available upon request, add suffix "V" (T1RBV3F4V)</i>			



T1RBV3F4D
4-Door Rack Mount Access System with Power

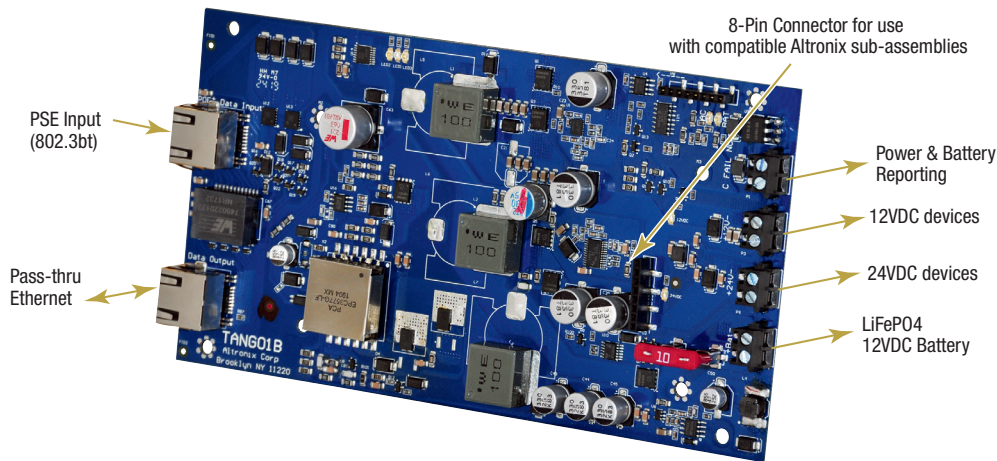


Optional Accessory:
- RE2 - Rack Mount Battery Enclosure (2U)
Accommodates up to four (4) 12VDC/7AH batteries

Power Supply/Chargers for TROVE Series

Altronix Model	Total Output Power	Number of Outputs	Built-in Battery Charger	Input
<i>ULXB Series Power Supply/Chargers</i>				
AL400ULXB2	12VDC @ 4A or 24VDC @ 3A	1	SLA	115VAC
AL600ULXB	12VDC or 24VDC @ 6A			
AL1012ULXB	12VDC @ 10A			
AL1024ULXB2	24VDC @ 10A			
AL400ULXB2V	12VDC @ 4A or 24VDC @ 3A			220VAC
AL600ULXB220	12VDC or 24VDC @ 6A			
AL1012ULXB220	12VDC @ 10A			
AL1024ULXB2V	24VDC @ 10A			
<i>Tango PoE Driven Power Supply/Charger</i>				
Tango1B	12VDC up to 6.25A (75W) and 24VDC up to 3A (75W)	2	LiFePO4	90W 802.3bt PoE

Revolutionizing Access Control Power
Now power your access system with 4PPoE, 802.3bt...



PoE Power Sourcing Equipment

Altronix Model	Description
NetWay1BT	Single Port 802.3bt Converter/Injector - 115/230VAC Input, 90W Output
NetWay4BT	4-Port Managed 802.3bt Midspan Injector supplies 90W per port (360W total power), built-in battery charger
NetWay8BT	8-Port Managed 802.3bt Midspan Injector supplies 90W per port (480W total power), built-in battery charger

Battery Backup

Altronix Model	Description
RE2	Rack Mount battery enclosure supports accommodates up to four (4) 12VDC/7AH batteries



NetWay1BT



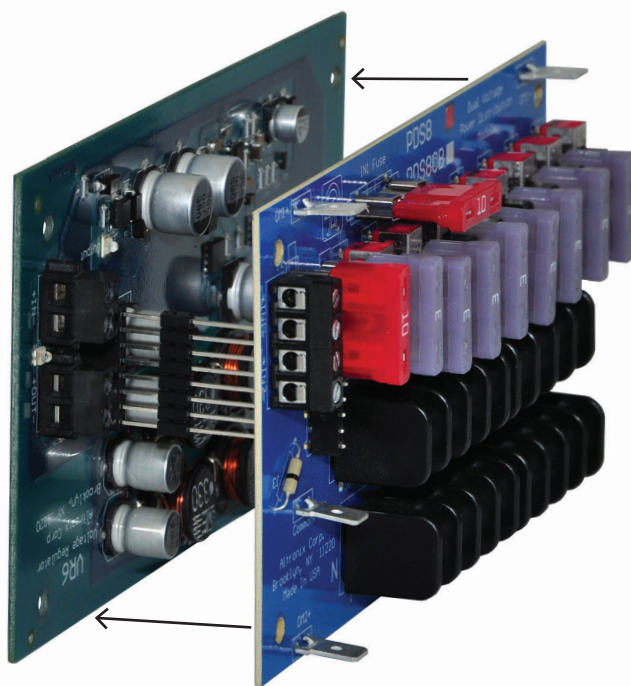
NetWay8BT



RE2

Power Distribution / Sub Assemblies for TROVE Series

Altronix Model	Description
ACM4 / ACM4CB	4-Output Access Power Controller
ACM8 / ACM8CB	8-Output Access Power Controller
ACMS8 / ACMS8CB	Dual Input, 8-Output Access Power Controller
ACMS8K1 / ACMS8CBK1	Dual Input, 8-Output Access Power Controller and Voltage Regulator Kit
ACMS12 / ACMS12CB	Dual Input, 12-Output Access Power Controller
LINQ2	Network Communication Module
LINQ8PD / LINQ8PDCB	Dual Input, 8-Output Network Power Distribution Module - Control, Monitor and report Power/Diagnostics
LINQ8ACM / LINQ8ACMCB	Dual Input, 8-Output Network Power Access Power Controller - Control, Monitor and report Power/Diagnostics
LPD	Low Power Disconnect Module (12/24VDC input)
MOM5	5-Output Power Distribution Module with Fire Alarm Interface
NETWAY5A	5-Port Switch Board Facilitates Network Drops
PD4UL / PD4ULCB	4-Output Power Distribution Module
PD8UL / PD8ULCB	8-Output Power Distribution Module
PDS8 / PDS8CB	Dual Input, 8-Output Power Distribution Module
PDS8K1 / PDS8CBK1	Dual Input, 8-Output Power Distribution Module and Voltage Regulator Kit
PD16W / PD16WCB	16-Output Power Distribution Module
PDS16 / PDS16CB	Dual Input, 16-Output Power Distribution Module
VR6	Stackable Voltage Regulator Converts a 24VDC input to 5VDC or 12VDC up to 6A output
VR10	Stackable Voltage Regulator Converts a 24VDC input to 5VDC or 12VDC up to 10A output



Stackable sub-assemblies save valuable enclosure space, allowing for more power distribution and access controllers.

Optional Accessories for TROVE Series

Altronix Model	Description	
BL3	18" Battery Leads (black and red)	 <p>BTL125</p>
BL4	8" Battery Series Jumper (yellow)	
BL6	68" Battery Leads (black and red)	
BR1	Add-on mounting bracket. Mount additional Altronix sub-assemblies to the enclosure's side wall.	
BT126	12VDC / 7AH Rechargeable Battery	
BT1212	12VDC / 12AH Rechargeable Battery	
BTL125	Rechargeable 12V Lithium Iron Phosphate (LiFePO4) Battery	 <p>PSC1</p>
MM4	Pack of 4 Mounting Magnets w/6-32 Standoffs & screws. 26 lbs. holding force.	
MM4S	Pack of 4 Mounting Magnets w/4-40 Standoffs & screws. 26 lbs. holding force.	 <p>RSB2</p>
MM8	Pack of 8 Mounting Magnets w/6-32 Standoffs & screws. 26 lbs. holding force.	
MM8S	Pack of 8 Mounting Magnets w/4-40 Standoffs & screws. 26 lbs. holding force.	
MM12	Pack of 12 Mounting Magnets w/6-32 Standoffs & screws. 26 lbs. holding force.	
MM24	Pack of 24 Mounting Magnets w/6-32 Standoffs & screws. 26 lbs. holding force.	 <p>TROVE3BWC</p>
PSC1	Power Supply Protective Cover (Includes standoffs)	
RSB1	Rocker Switch with Bracket Includes single Master Power ON/OFF Switches and Wires	 <p>TROVE3SWC</p>
RSB2	Rocker Switches with Bracket Includes two (2) Master Power ON/OFF Switches and Wires	
SPACER1	5/8" Nylon female/female spacers (standoffs) with 6/32 screws. Pack of 25.	
SPACER3	5/8" Aluminum female/female spacers (standoffs) with 6/32 screws. Pack of 25.	
SPACER9	5/8" Aluminum spacers (standoffs) with 4-40 screws. Pack of 8.	
TROVE2BWC	Trove2 Compatible Battery/Wire Enclosure (Bottom/top mount)	 <p>WM5</p>
TROVE3BWC	Trove3 Compatible Battery/Wire Enclosure (Bottom/top mount)	
TROVE3SWC	Trove3 Compatible Battery/Wire Enclosure (side mount)	
WM5	Magnetic cable tie mount. Accommodates standard zip ties. 16 lbs. holding force. Pack of 5.	
WM10	Magnetic cable tie mount. Accommodates standard zip ties. 16 lbs. holding force. Pack of 10.	
WM25	Magnetic cable tie mount. Accommodates standard zip ties. 16 lbs. holding force. Pack of 25.	
WM100	Magnetic cable tie mount. Accommodates standard zip ties. 16 lbs. holding force. Pack of 100.	

Rev. 1022

ER INTEGRATION AC
GRATION ACCESS & I
OWER INTEGRATION
INTEGRATION ACCE
RATION ACCESS & P
ION ACCESS & POW
SS & POWER INTEGI
OWER INTEGRATION



7700 Old Georgetown Road #300 | Bethesda, MD 20814 | 866.692.7486
customer@brivo.com