

ON ACCESS & POWER ESS & POWER IN INTEGRATION

— STREAMLINE DESIGN & DEPLOYMENT

 | Altronix

TRIVE™



Altronix
TROVE

Easily combine Altronix power and accessories with access controllers from the industry's leading manufacturers - Reducing installation and labor costs!

- Trove streamlines access control design and deployment, increasing profits and ROI.
- Removable backplanes allow you to configure and test prior to on-site installation.
- Trove enclosures are available in different sizes and configurations to meet your project scope – including wall mount, rack mount and outdoor models.
- **Pre-configured kits are available with power distribution, finger duct and wire assemblies.**
- Combine both access and intrusion modules for various brands - all in one enclosure, for added value!
- Optional LINQ™ Networked Power Management Technology allows you remotely monitor, control and report power/diagnostics, streamlining service and maintenance operations by leveraging the network.
- Altronix products are TAA & NDAA compliant
- Our free online Trove System Design tool simplifies the design and product selection process: www.altronix.com/system_design_tools/trove



TROVE1

- Knockouts accommodate up to 1.5" conduit
 - Accommodates two (2) 12VDC/7AH batteries
- Dimensions: 18" H x 14.5" W x 4.625" D

TROVE2

- Knockouts accommodate up to 2.0" conduit
 - Accommodates four (4) 12VDC/12AH batteries
- Dimensions: 27.25" H x 21.75" W x 6.5" D

TROVE3

- Knockouts accommodate up to 2.0" conduit
 - Accommodates four (4) 12VDC/12AH batteries
- Dimensions: 36.12" H x 30.12" W x 7.06" D



TROVE OUTDOOR

- NEMA 4/4X, IP66-11 Rated Outdoor Enclosure
 - Lockable latches and integral flanges simplify mounting
- Dimensions: 17.53" H x 15.3" W x 6.67" D

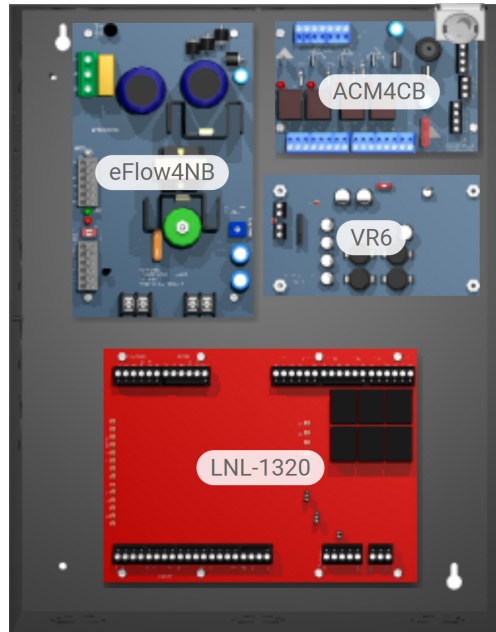
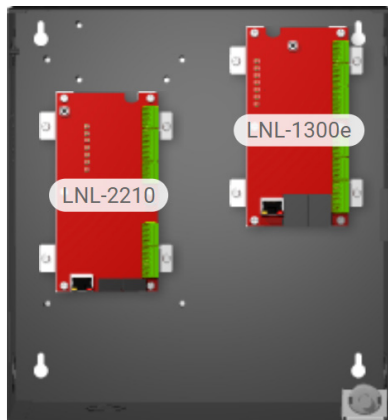


TROVE RACK MOUNT

- 2U, 24" or 36" deep rack drawer on extendable rails
 - Integrated Z bracket on rear facilitates wiring
- Dimensions: 3.375" H x 19" W x 24" D

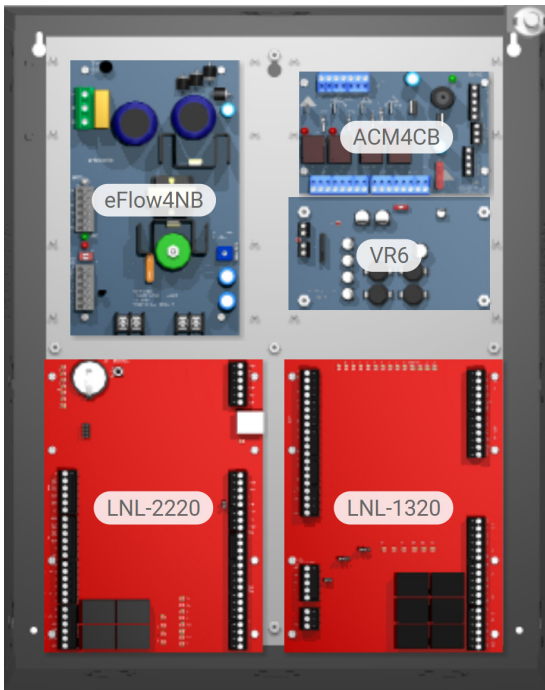
Altronix Model	Description	System Capacity	Compatible LenelS2 OnGuard Models	
<i>Trove1 Series - Accommodates Altronix Power and Distribution with Controllers</i>				
TROVE1M1	Enclosure + Backplane	8-Doors	LNL-2220, LNL-4420, LNL-1100, LNL-1200, LNL-3300, LNL-8000, LNL-2210, LNL-1300, LNL-1300e	
TM1	Backplane only			
<i>Trove2 Series - Accommodates Altronix Power and Distribution with Controllers</i>				
TROVE2M2	Enclosure + Backplane	12-Doors		
TM2	Backplane only			
<i>Trove3 Series - Accommodates Altronix Power and Distribution with Controllers</i>				
TROVE3M3	Enclosure + Backplane	24-Doors		
TM3	Backplane only			
<i>Trove2 and Trove3 Door Backplane only</i>				
TMV2	Door Backplane only	12-Doors		
<i>Compact Mercury Enclosures</i>				
TM250	Enclosure	2-Doors	LNL-2210, LNL-1300, LNL-1300e	
TM400	Enclosure	2-Doors	LNL-2220, LNL-4420, LNL-1100, LNL-1200, LNL-3300, LNL-8000, LNL-2210, LNL-1300, LNL-1300e	

TM250
2-Door Access System

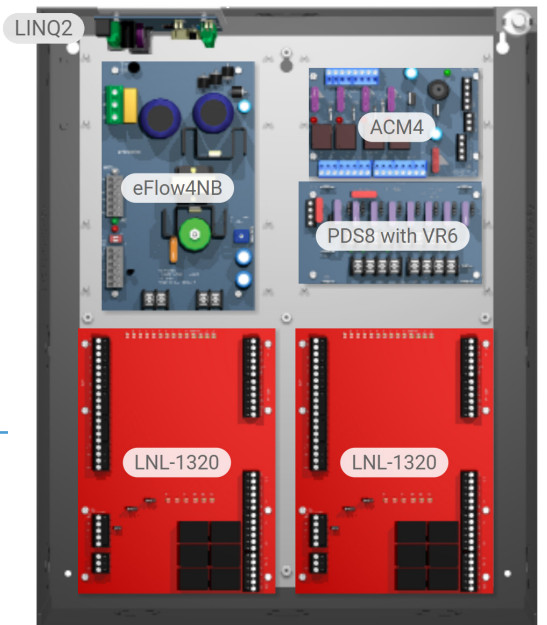


TM400
2-Door Access System

Altronix Model	Description		System Capacity	Compatible LenelS2 OnGuard Models
<i>Trove1 Pre-configured Kits</i>				
<i>Fuse Protected Models</i>		<i>PTC Protected Models</i>		LNL-2220, LNL-4420, LNL-1100, LNL-1200, LNL-3300, LNL-8000, LNL-2210, LNL-1300, LNL-1300e
T1MK1F4	eFlow4NB, ACM4, VR6	T1MK1F4D	eFlow4NB, ACM4CB, VR6	
T1MK1F4S	eFlow4NB, ACM4, VR6, PDS8	T1MK1F4SD	eFlow4NB, ACM4CB, VR6, PDS8CB	
<i>Managed Fuse Protected Models</i>		<i>Managed PTC Protected Models</i>		
T1MK1F4Q	eFlow4NB, LINQ2, ACM4, VR6, PDS8	T1MK1F4DQ	eFlow4NB, LINQ2, ACM4CB, VR6	
T1MK1F4SQ	eFlow4NB, LINQ2, ACM8, VR6, PDS8	T1MK1F4SDQ	eFlow4NB, LINQ2, ACM4CB, VR6, PDS8CB	
<i>220VAC units available upon request, add suffix "V" (T1MK1F4V)</i>				

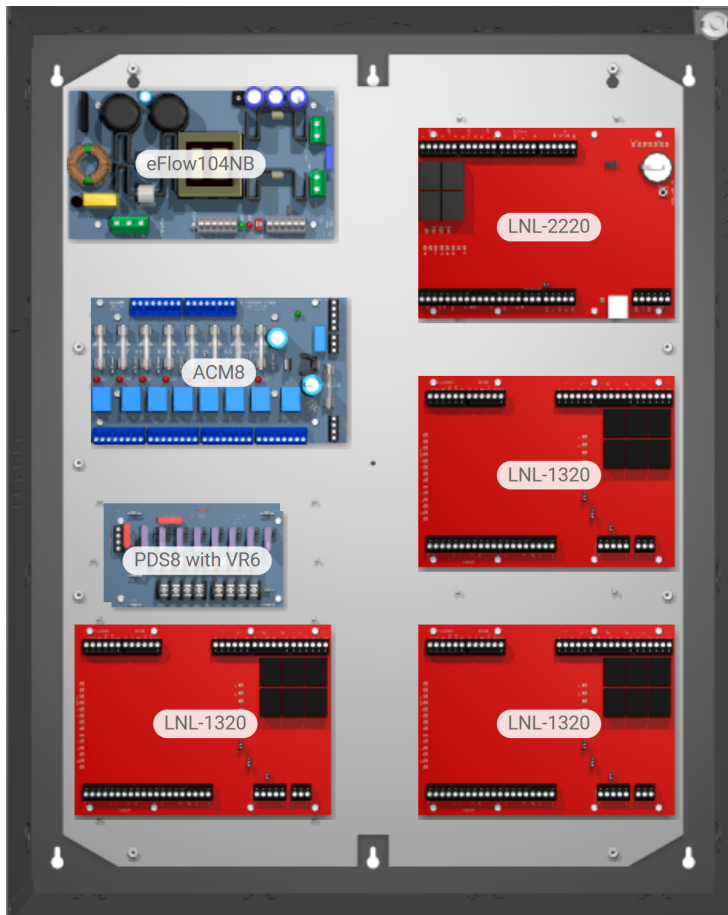


T1MK1F4D
4-Door Access System with Power



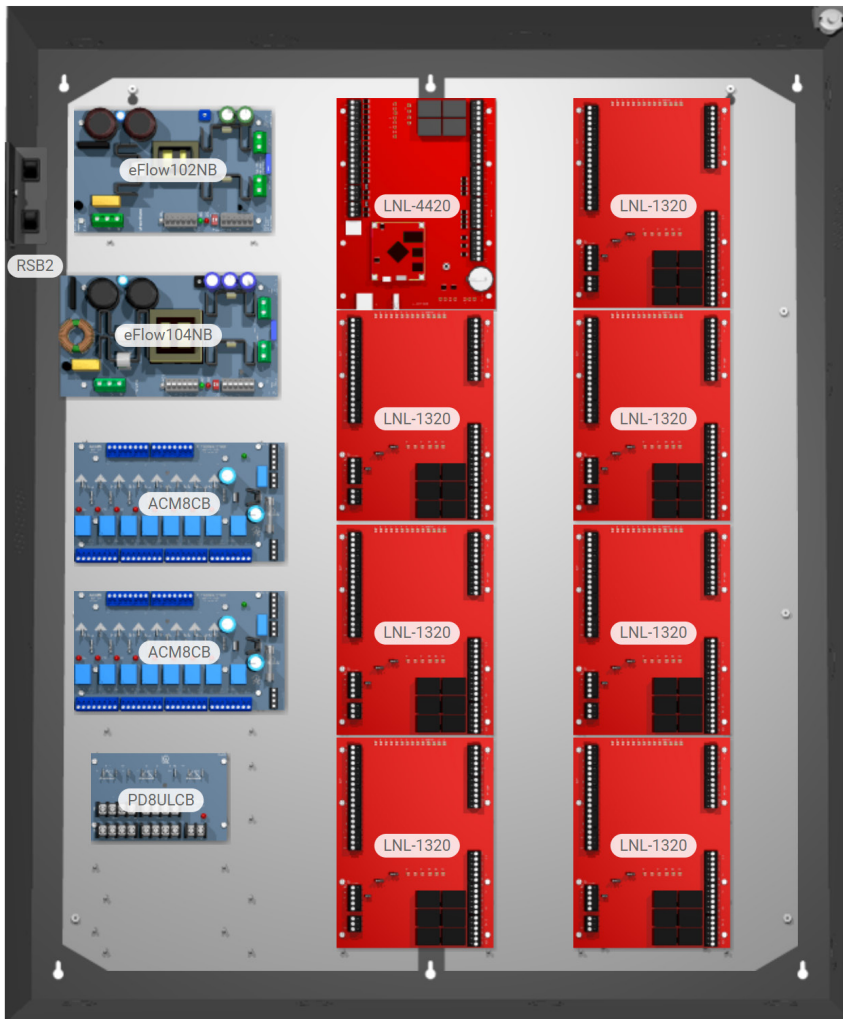
T1MK1F4SQ
4-Door Access System
Managed with Power

Altronix Model	Description	Altronix Model	Description	System Capacity	Compatible LenelS2 OnGuard Models	
Trove2 Pre-configured Kits						
<i>Fuse Protected Models</i>			<i>PTC Protected Models</i>			
T2MK3F4	eFlow6NB, ACM4, VR6, PDS8	T2MK3F4D	eFlow6NB, ACM4CB, VR6, PDS8CB	4-Doors	LNL-2220, LNL-4420, LNL-1100, LNL-1200, LNL-3300, LNL-8000, LNL-2210, LNL-1300, LNL-1300e	
T2MK3F8	eFlow6NB, ACM8, VR6, PDS8	T2MK3F8D	eFlow6NB, ACM8CB, VR6, PDS8CB	8-Doors		
T2MK7F8	eFlow104NB, ACM8, VR6, PDS8	T2MK7F8D	eFlow104NB, ACM8CB, VR6, PDS8CB			
<i>Managed Fuse Protected Models</i>			<i>Managed PTC Protected Models</i>			
T2MK3F4Q	eFlow6NB, LINQ2, ACM4, VR6, PDS8	T2MK3F4DQ	eFlow6NB, LINQ2, ACM4CB, VR6, PDS8CB	4-Doors		
T2MK3F8Q	eFlow6NB, LINQ2, ACM8, VR6, PDS8	T2MK3F8DQ	eFlow6NB, LINQ2, ACM8CB, VR6, PDS8CB	8-Doors		
T2MK7F8Q	eFlow104NB, LINQ2, ACM8, VR6, PDS8	T2MK7F8DQ	eFlow104NB, LINQ2, ACM8CB, VR6, PDS8CB			
Trove2 Series Pre-configured Kits (Utilizing TMV2 Door Backplane)						
<i>Fuse Protected Models</i>			<i>PTC Protected Models</i>			
T2MK75F16	eFlow102NB, eFlow104NB, 2-ACM8, PD16W	T2MK75F16D	eFlow102NB, eFlow104NB, 2-ACM8CB, PD16WCB	16-Doors		
T2MK77F16	2-eFlow104NB, 2-ACM8, VR6, PDS8	T2MK77F16D	2-eFlow104NB, 2-ACM8CB, VR6, PDS8CB			
<i>Managed Fuse Protected Models</i>			<i>Managed PTC Protected Models</i>			
T2MK75F16Q	eFlow102NB, eFlow104NB, LINQ2, 2-ACM8, PD16W	T2MK75F16DQ	eFlow102NB, eFlow104NB, LINQ2, 2-ACM8CB, PD16WCB	16-Doors		
T2MK77F16Q	2-eFlow104NB, LINQ2, 2-ACM8, VR6, PDS8	T2MK77F16DQ	2-eFlow104NB, LINQ2, 2-ACM8CB, VR6, PDS8CB			
220VAC units available upon request, add suffix "V" (T2MK3F4DV)						



T2MK7F8
8-Door Access System
with Managed Power

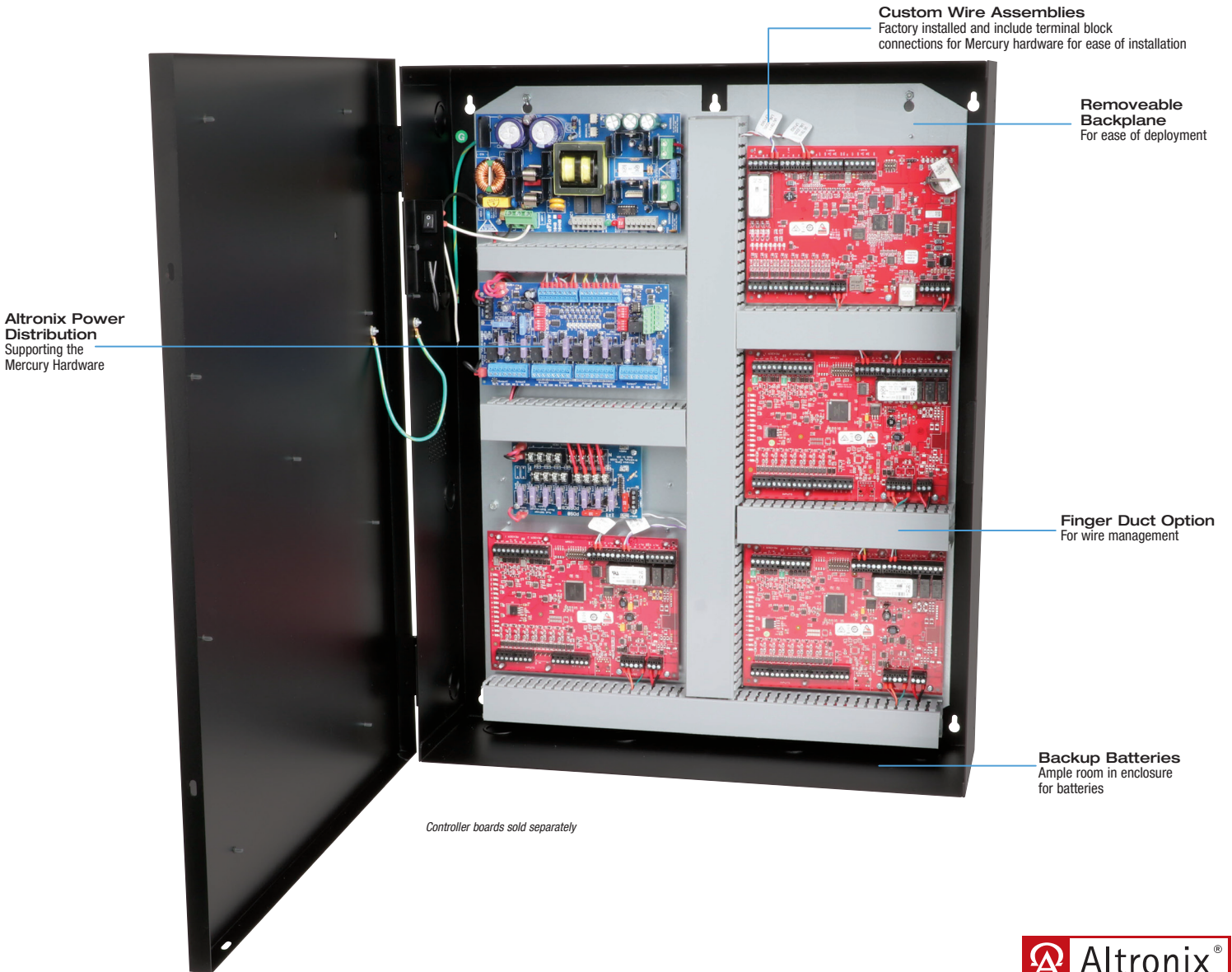
Altronix Model	Description	Altronix Model	Description	System Capacity	Compatible LenelS2 OnGuard Models
<i>Trove3 Series Pre-configured Kits</i>					
<i>Fuse Protected Models</i>		<i>PTC Protected Models</i>			
T3MK75F16	eFlow102NB, eFlow104NB, 2-ACM8, PD8UL, RSB2	T3MK75F16D	eFlow102NB, eFlow104NB, 2-ACM8CB, PD8ULCB, RSB2	16-Doors	LNL-2220, LNL-4420, LNL-1100, LNL-1200, LNL-3300, LNL-8000, LNL-2210, LNL-1300, LNL-1300e
T3MK77F16	2-eFlow104NB, 2-ACM8, 2-PD8UL, RSB2	T3MK77F16D	2-eFlow104NB, 2-ACM8CB, 2-PD8ULCB, RSB2		
T3MK75F16S	eFlow102NB, eFlow104NB, 2-ACMS8, PDS8, RSB2	T3MK75F16SD	eFlow102NB, eFlow104NB, 2-ACMS8CB, PDS8CB, RSB2		
T3MK77F16S	2-eFlow104NB, 2-ACMS8, 2-PDS8, 2-VR6, RSB2	T3MK77F16SD	2-eFlow104NB, 2-ACMS8CB, 2-PDS8CB, 2-VR6, RSB2		
<i>220VAC units available upon request, add suffix "V" (T3MK75F16V)</i>					



T3MK75F16D
16-Door Access System with Power

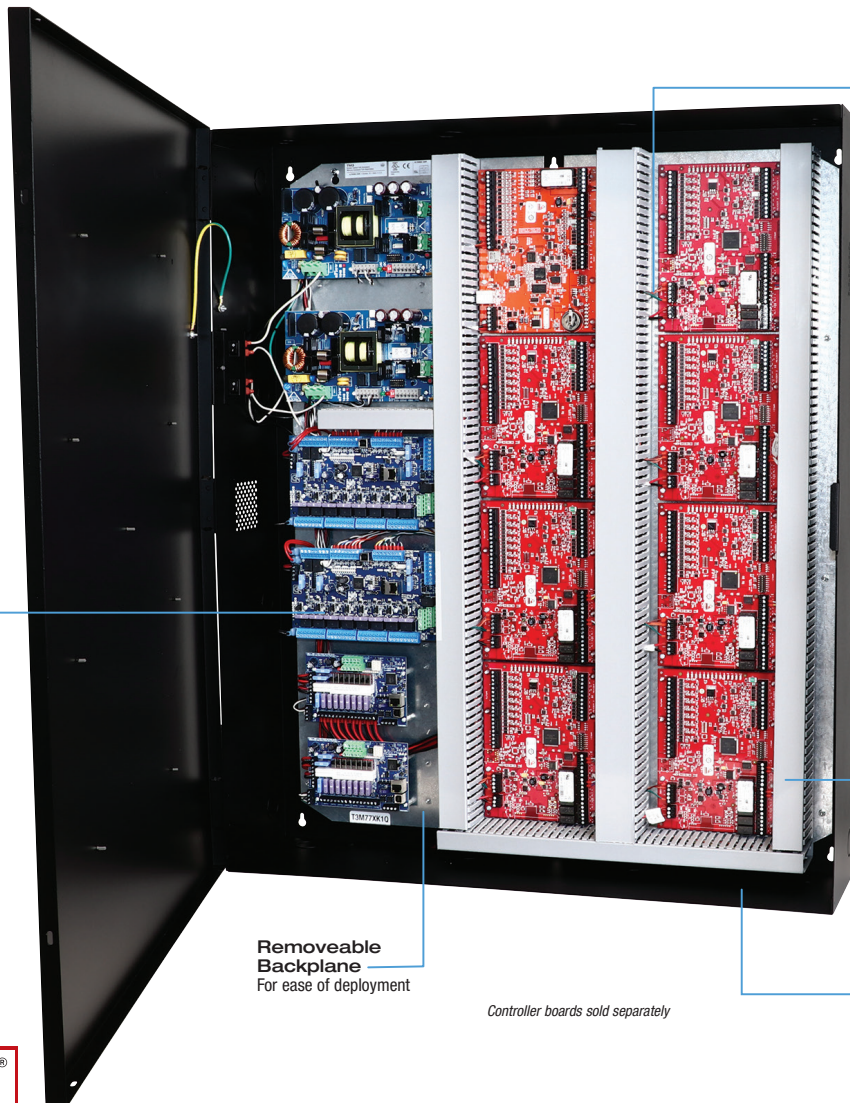
Pre-wired Access and Power Integration Kits

Altronix Model	Description	Altronix Model	Description	System Capacity	Compatible LenelS2 OnGuard Models
Trove2 Series - Includes Power Distribution, Wire Assemblies for Controllers and Finger-duct for Wire Management					
<i>Fuse Protected Models</i>		<i>PTC Protected Models</i>			
T2M7XK1	Trove2M2 with eFlow104NB, ACMS8, VR6, PDS8, RSB1	T2M7XK1D	Trove2M2 with eFlow104NB, ACMS8CB, VR6, PDS8CB, RSB1	8-Doors	1-LNL-2220 and 3-LNL-1320
T2M7XK2		T2M7XK2D		6-Doors	1-LNL-3300 and 3-LNL-1320
T2M7XK3		T2M7XK3D		8-Doors	4-LNL-1320
Managed Trove2 Series - Includes Power Distribution, Wire Assemblies for Controllers and Finger-duct for Wire Management					
<i>Fuse Protected Models</i>		<i>PTC Protected Models</i>			
T2M7XK1Q	Trove2M2 with eFlow104NB, LINQ8ACM, VR6, LINQ8PD, RSB1	T2M7XK1DQ	Trove2M2 with eFlow104NB, LINQ8ACMCB, VR6, LINQ8PDCB, RSB1	8-Doors	1-LNL-2220 and 3-LNL-1320
T2M7XK2Q		T2M7XK2DQ		6-Doors	1-LNL-3300 and 3-LNL-1320
T2M7XK3Q		T2M7XK3DQ		8-Doors	4-LNL-1320
220VAC units available upon request, add suffix "V" (T2M7XK1V)					



Pre-wired Access and Power Integration Kits

Altronix Model	Description	Altronix Model	Description	System Capacity	Compatible LenelS2 OnGuard Models
Trove3 Series - Includes Power Distribution, Wire Assemblies for Controllers and Finger-duct for Wire Management					
<i>Fuse Protected Models</i>		<i>PTC Protected Models</i>			
T3M77XK1	Trove3M3 with 2-eFlow104NB, 2-ACMS8, 2-VR6, 2-PDS8, RSB2	T3M77XK1D	Trove3M3 with 2-eFlow104NB, 2-ACMS8CB, 2-VR6, 2-PDS8CB, RSB2	16-Doors	1-LNL-2220 and 7-LNL-1320
T3M77XK2		T3M77XK2D		14-Doors	1-LNL-3300 and 7-LNL-1320
T3M77XK3		T3M77XK3D		16-Doors	8-LNL-1320
T3M7724XK1	Trove3M3 with TMV2 2-eFlow104NB, 2-ACMS12, 2-PDS8, RSB2	T3M7724XK1D	Trove3M3 with TMV2 2-eFlow104NB, 2-ACMS12CB, 2-PDS8CB, RSB2	24-Doors	1-LNL-2220 and 11-LNL-1320
T3M7724XK2		T3M7724XK2D		22-Doors	1-LNL-3300 and 11-LNL-1320
T3M7724XK3		T3M7724XK3D		24-Doors	12-LNL-1320
Managed Trove3 Series - Includes Power Distribution, Wire Assemblies for Controllers and Finger-duct for Wire Management					
<i>Fuse Protected Models</i>		<i>PTC Protected Models</i>			
T3M77XK1Q	Trove3M3 with 2-eFlow104NB, 2-LINQ8ACM, 2-VR6, 2-LINQ8PD, RSB2	T3M77XK1DQ	Trove3M3 with 2-eFlow104NB, 2-LINQ8ACMCB, 2-VR6, 2-LINQ8PDCB, RSB2	16-Doors	1-LNL-2220 and 7-LNL-1320
T3M77XK2Q		T3M77XK2DQ		14-Doors	1-LNL-3300 and 7-LNL-1320
T3M77XK3Q		T3M77XK3DQ		16-Doors	8-LNL-1320
<i>220VAC units available upon request, add suffix "V" (T2M7XK1V)</i>					



Altronix Power Distribution Supporting the Mercury Hardware

Custom Wire Assemblies Factory installed and include terminal block connections for Mercury hardware for ease of installation

Finger Duct Option For wire management

Removeable Backplane For ease of deployment

Backup Batteries Ample room in enclosure for batteries

Controller boards sold separately

Pre-wired Access and Power Integration Kits

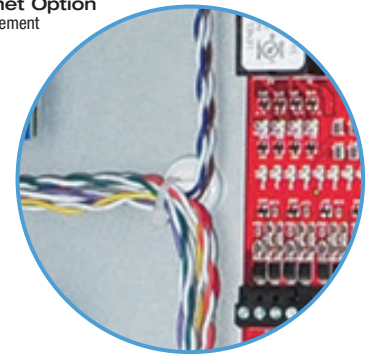
Altronix Model	Description	Altronix Model	Description	System Capacity	Compatible MERCURY* Models
Trove1 Series - Includes Power Distribution, Wire Assemblies for Controllers and Wire Magnets for Wire Management					
<i>Fuse Protected Models</i>			<i>PTC Protected Models</i>		
T1M1CK1	Trove1M1 with eFlow4NB, ACM4, VR6, PDS8, RSB1	T1M1CK1D	Trove1M1 with eFlow4NB, ACM4CB, VR6, PDS8CB, RSB1	4-Doors	1-LNL-2220 and 1-LNL-1320
T1M1CK2		T1M1CK2D		2-Doors	1-LNL-3300 and 1-LNL-1320
T1M1CK3		T1M1CK3D		4-Doors	2-LNL-1320
Managed Trove1 Series - Includes Power Distribution, Wire Assemblies for Controllers and Wire Magnets for Wire Management					
<i>Fuse Protected Models</i>			<i>PTC Protected Models</i>		
T1M1CK1Q	Trove1M1 with eFlow4NB, VR6, LINQ8PD, RSB1	T1M1CK1DQ	Trove1M1 with eFlow4NB, VR6, LINQ8PDCB, RSB1	4-Doors	1-LNL-2220 and 1-LNL-1320
T1M1CK2Q		T1M1CK2DQ		2-Doors	1-LNL-3300 and 1-LNL-1320
T1M1CK3Q		T1M1CK3DQ		4-Doors	2-LNL-1320
220VAC units available upon request, add suffix "V" (T1M7XK1V)					



Altronix Power Distribution
Supporting the Mercury Hardware

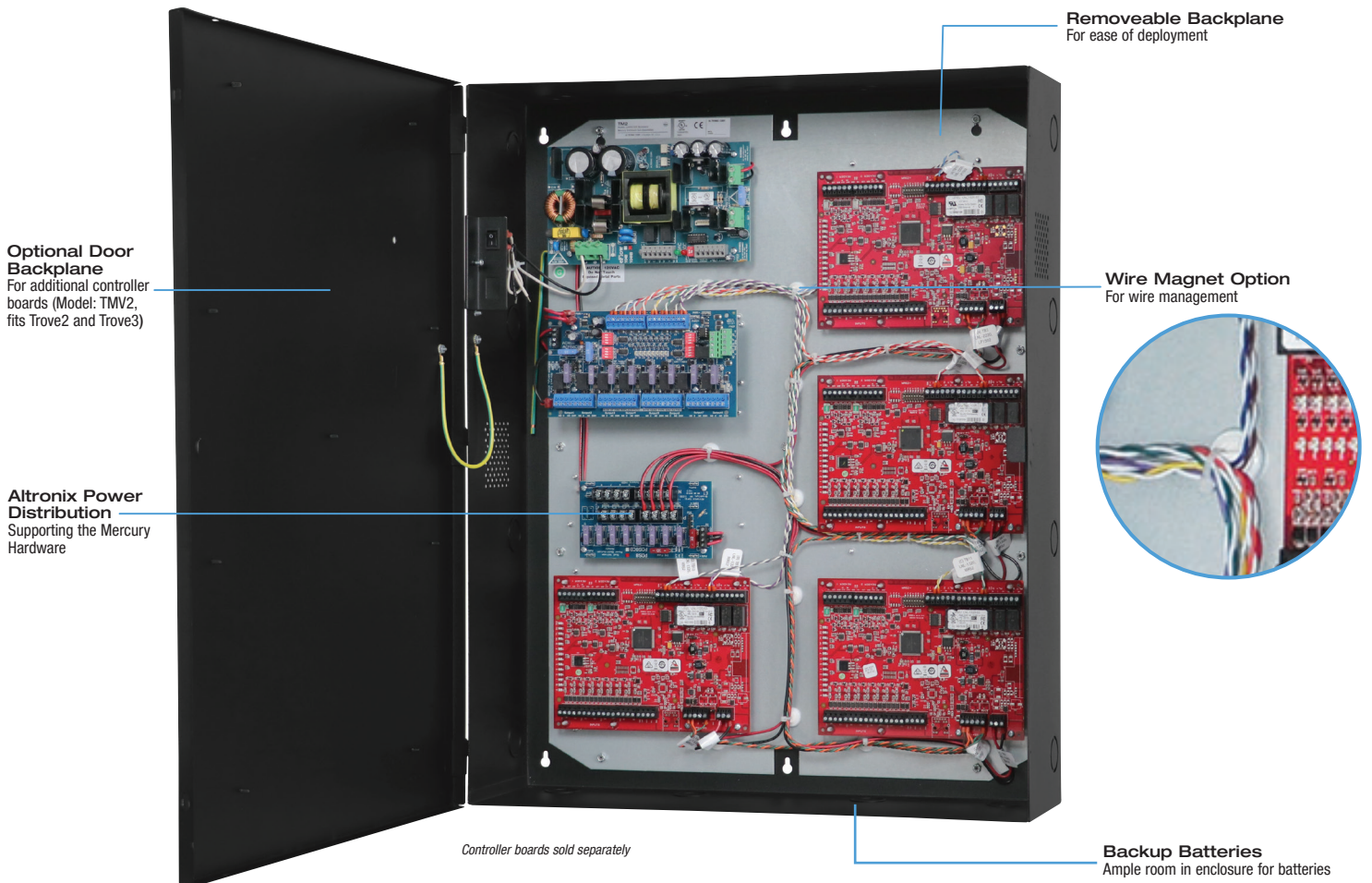
Removeable Backplane
For ease of deployment

Wire Magnet Option
For wire management



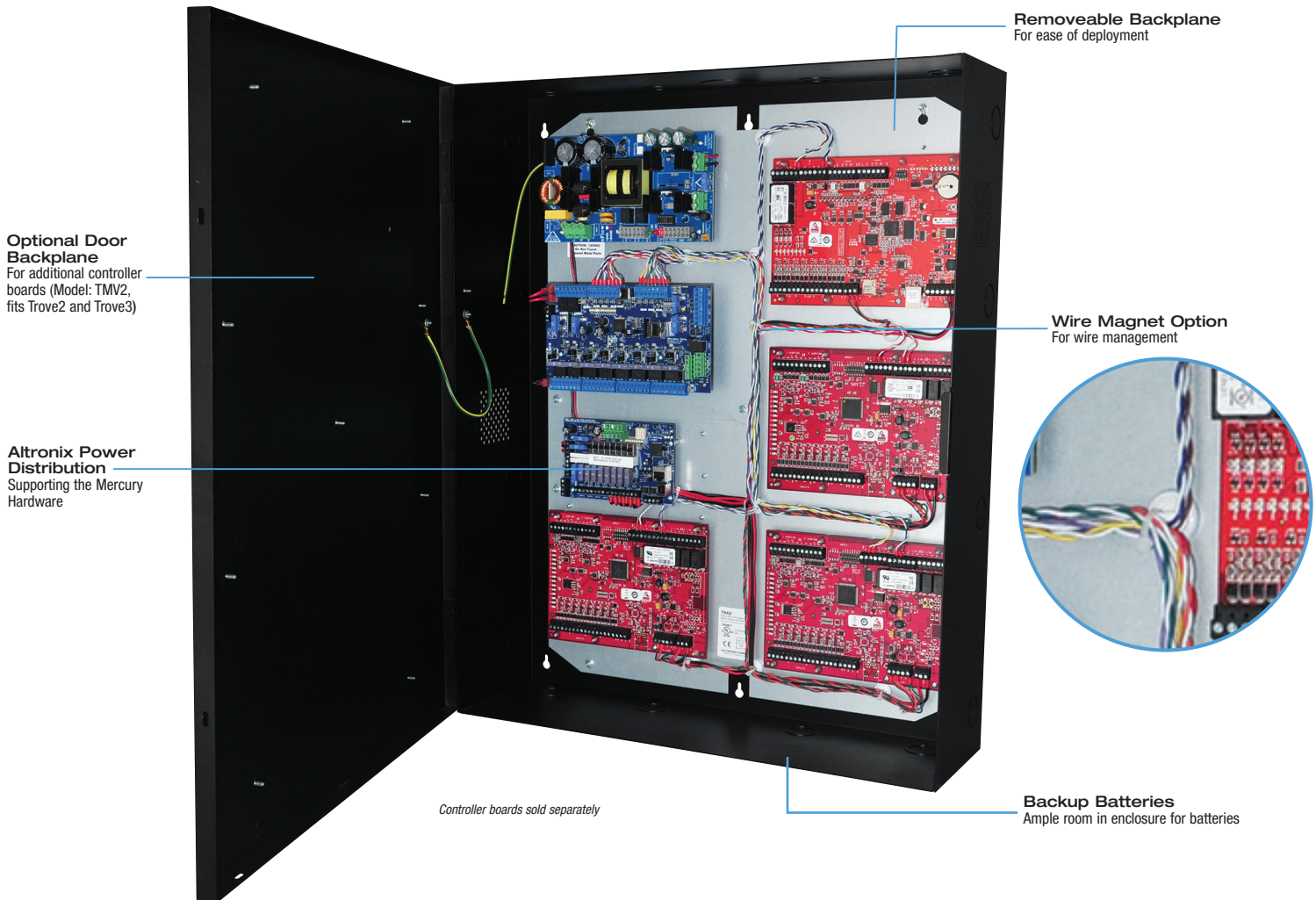
Pre-wired Access and Power Integration Kits

Altronix Model	Description	Altronix Model	Description	System Capacity	Compatible MERCURY* Models
Trove2 Series - Includes Power Distribution, Wire Assemblies for Controllers and Wire Magnets for Wire Management					
<i>Fuse Protected Models</i>			<i>PTC Protected Models</i>		
T2M7CK1	Trove2M2 with eFlow104NB, ACMS8, VR6, PDS8, RSB1	T2M7CK1D	Trove2M2 with eFlow104NB, ACMS8CB, VR6, PDS8CB, RSB1	8-Doors	1-LNL-2220 and 3-LNL-1320
T2M7CK2		T2M7CK2D		6-Doors	1-LNL-3300 and 3-LNL-1320
T2M7CK3		T2M7CK3D		8-Doors	4-LNL-1320
Trove3 Series - Includes Power Distribution, Wire Assemblies for Controllers and Wire Magnets for Management					
<i>Fuse Protected Models</i>			<i>PTC Protected Models</i>		
T3M77CK1	Trove3M3 with 2-eFlow104NB, 2-ACMS8, 2-VR6, 2-PDS8, RSB2	T3M77CK1D	Trove3M3 with 2-eFlow104NB, 2-ACMS8CB, 2-VR6, 2-PDS8CB, RSB2	16-Doors	1-LNL-2220 and 7-LNL-1320
T3M77CK2		T3M77CK2D		14-Doors	1-EP(LP)2500 and 7-LNL-1320
T3M77CK3		T3M77CK3D		16-Doors	8-LNL-1320
220VAC units available upon request, add suffix "V" (T2M7CK1V)					



Pre-wired Access and Power Integration Kits

Altronix Model	Description	Altronix Model	Description	System Capacity	Compatible MERCURY* Models
Managed Trove2 Series - Includes Power Distribution, Wire Assemblies for Controllers and Wire Magnets for Wire Management					
<i>Fuse Protected Models</i>			<i>PTC Protected Models</i>		
T2M7CK1Q	Trove2M2 with eFlow104NB, LINQ8ACM, VR6, LINQ8PD, RSB1	T2M7CK1DQ	Trove2M2 with eFlow104NB, LINQ8ACMCB, VR6, LINQ8PDCB, RSB1	8-Doors	1-LNL-2220 and 3-LNL-1320
T2M7CK2Q		T2M7CK2DQ		6-Doors	1-LNL-3300 and 3-LNL-1320
T2M7CK3Q		T2M7CK3DQ		8-Doors	4-LNL-1320
Managed Trove3 Series - Includes Power Distribution, Wire Assemblies for Controllers and Wire Magnets for Management					
<i>Fuse Protected Models</i>			<i>PTC Protected Models</i>		
T3M77CK1Q	Trove3M3 with 2-eFlow104NB, 2-LINQ8ACM, 2-VR6, 2-LINQ8PD, RSB2	T3M77CK1DQ	Trove3M3 with 2-eFlow104NB, 2-LINQ8ACMCB, 2-VR6, 2-LINQ8PDCB, RSB2	16-Doors	1-LNL-2220 and 7-LNL-1320
T3M77CK2Q		T3M77CK2DQ		14-Doors	1-EP(LP)2500 and 7-LNL-1320
T3M77CK3Q		T3M77CK3DQ		16-Doors	8-LNL-1320
220VAC units available upon request, add suffix "V" (T2M7CK1V)					



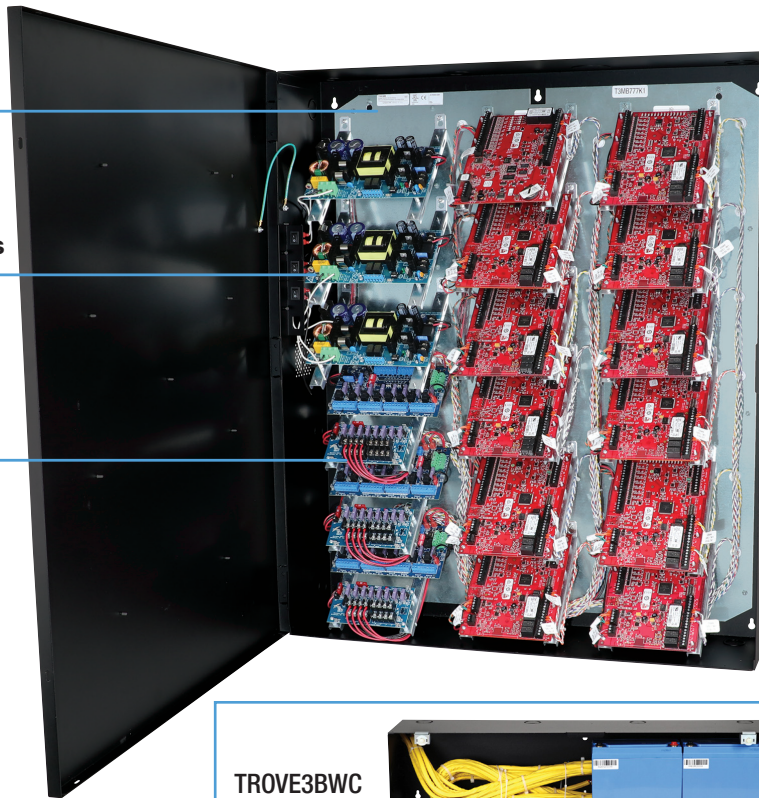
Maximum-density Access and Power Integration

Altronix Model	Description	System Capacity	Compatible MERCURY Models		
<i>Trove3 Series with Angled Brackets for high capacity systems</i>					
TROVE3MBK3	Enclosure + Backplane with 36-BR3M Angled Brackets	24-Doors (with power)	LNL-2220, LNL-4420, LNL-1100, LNL-1200, LNL-3300, LNL-8000		
TMB3	Backplane only	36-Doors (controllers only)			
Altronix Model	Description	Altronix Model	Description	System Capacity	Compatible MERCURY Models
<i>Trove3 Series - Includes Power Distribution, Wire Assemblies for Controllers and Wire Magnets for Management</i>					
<i>Fuse Protected Models</i>			<i>PTC Protected Models</i>		
T3MB755K1	Trove3MBK3 with 1-eFlow104NB, 2-eFlow102NB, 3-ACMS8, 3-PDS8, RSB2, RSB1	T3MB755K1D	Trove3MBK3 with 1-eFlow104NB, 2-eFlow102NB, 3-ACMS8CB, 3-PDS8CB, RSB2, RSB1	24-Doors	1-LNL-2220 and 11-LNL-1320
T3MB777K1	Trove3MBK3 with 3-eFlow104NB, 3-ACMS8, 3-PDS8, RSB2, RSB1	T3MB777K1D	Trove3MBK3 with 3-eFlow104NB, 3-ACMS8, 3-PDS8, RSB2, RSB1		
<i>Optional Accessories for TROVE3MBK3</i>					
BR3M2PK	2-Pack of Angled Brackets for TROVE3MB3				

Removeable Backplane
For ease of deployment

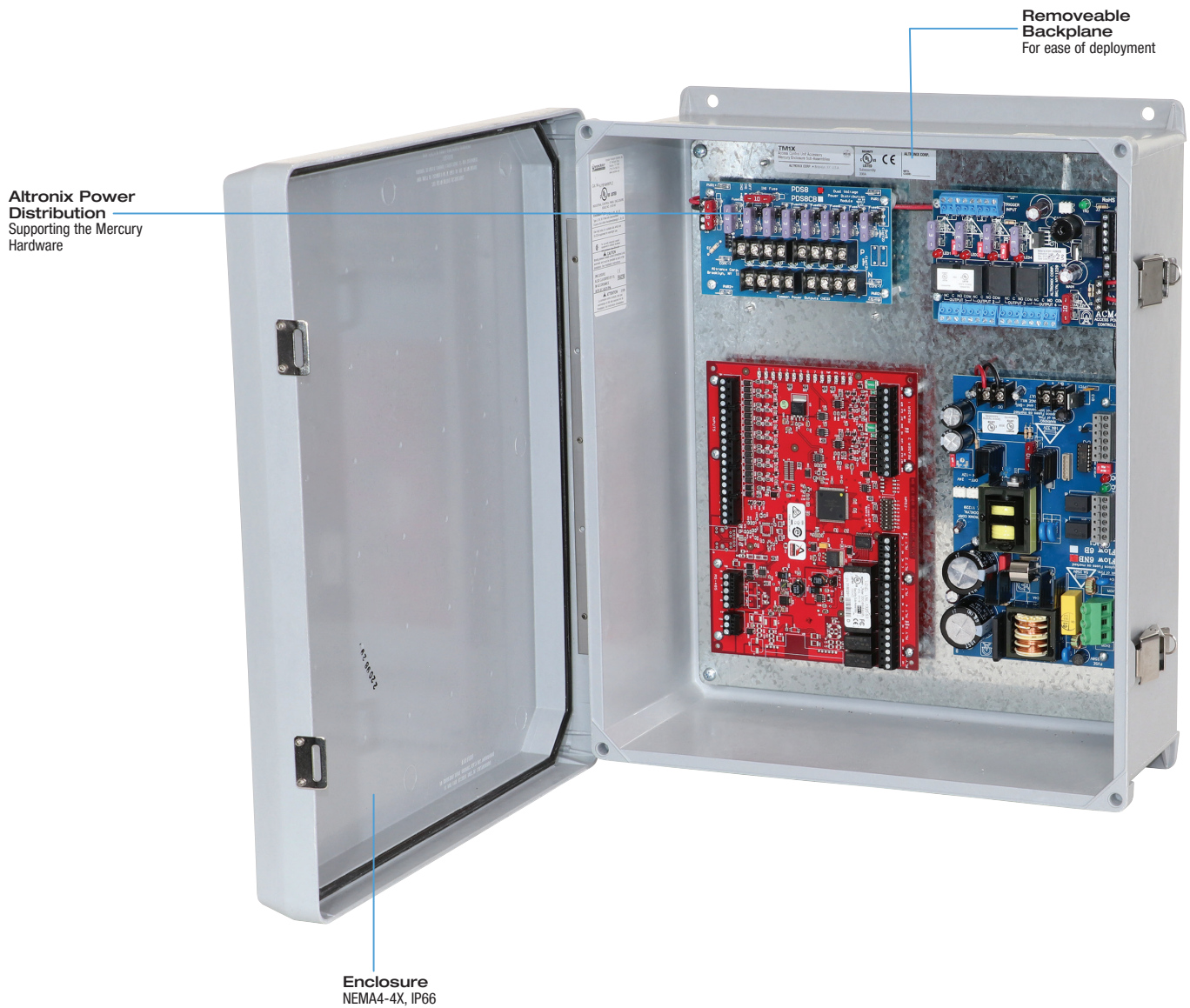
Innovative Angle Brackets
For Power distribution and Mercury hardware

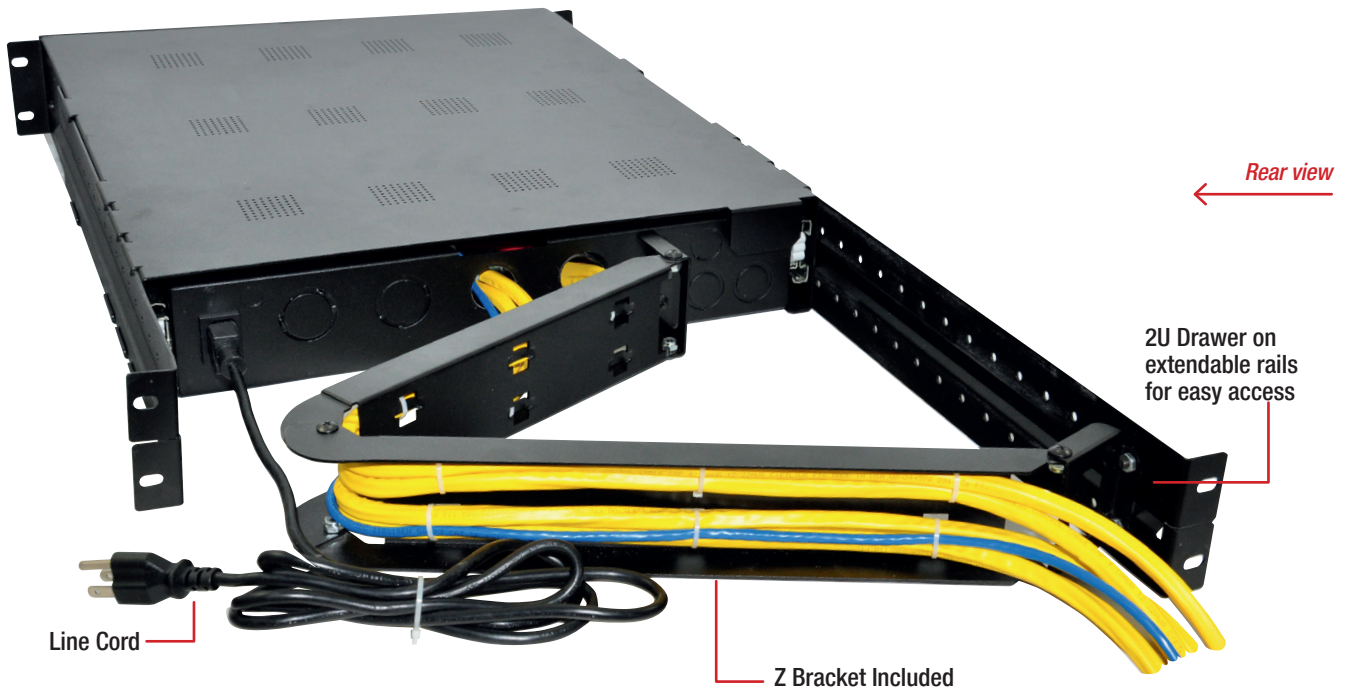
Custom Wiring Options
For power distribution and controller connections



Outdoor Access and Power Integration

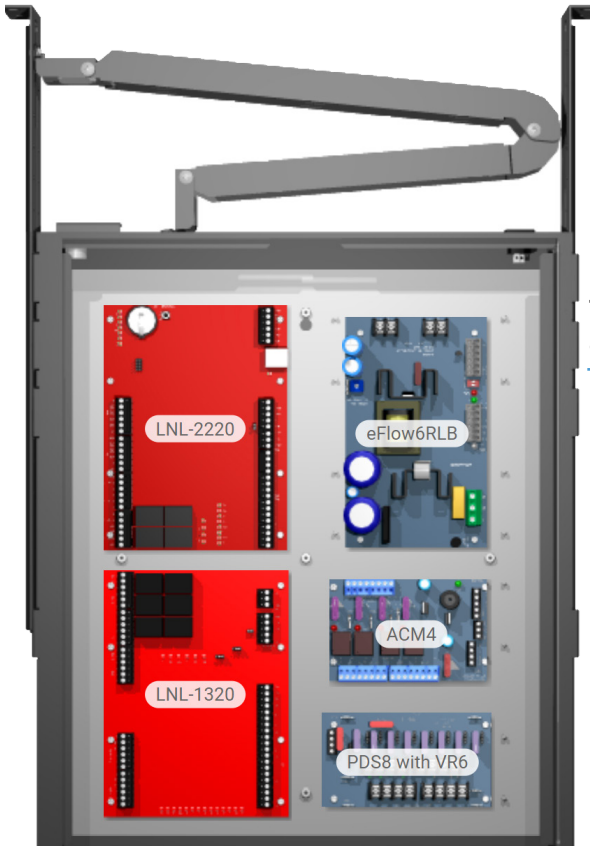
Altronix Model	Description	System Capacity	Compatible Mercury* Models
<i>Trove Outdoor Series - Weatherproof Enclosure for vehicle/pedestrian gate access</i>			
TROVE1M1WP	NEMA4/4X IP66 Outdoor Enclosure	2-Doors	LNL-2220, LNL-4420, LNL-1100, LNL-1200, LNL-3300, LNL-8000, LNL-2210, LNL-1300, LNL-1300e





Rack Mount Access and Power Integration

Altronix Model	Description			System Capacity	Compatible Mercury* Models	
<i>Mercury Trove1R 24" Rack Series - Accommodates Altronix Power and Distribution with Controllers</i>						
TROVE1M1R	2U Rack 19" Depth Enclosure + Backplane			4-Doors	LNL-2220, LNL-4420, LNL-1100, LNL-1200, LNL-3300, LNL-8000, LNL-2210, LNL-1300, LNL-1300e	
<i>Mercury Trove2R 40" Rack Series - Accommodates Altronix Power and Distribution with Controllers</i>						
TROVE2M2R	2U Rack 19" Depth Enclosure + Backplane			8-Doors		
Altronix Model	Description	Altronix Model	Description	System Capacity	Compatible Mercury* Models	
<i>Trove 24" Rack Series Pre-assembled Kits</i>						
<i>Fuse Protected Models</i>			<i>PTC Protected Models</i>			
T1RM3F4	eFlow6NB, ACM4, VR6, PDS8	T1RM3F4D	eFlow6NB, ACM4CB, VR6, PDS8CB	4-Doors	LNL-2220, LNL-4420, LNL-1100, LNL-1200, LNL-3300, LNL-8000, LNL-2210, LNL-1300, LNL-1300e	
<i>Trove 40" Rack Series Pre-assembled Kits</i>						
<i>Fuse Protected Models</i>			<i>PTC Protected Models</i>			
T2RM7F8S	eFlow104NB, ACMS8, VR6, PDS8	T2RM7F8SD	eFlow104NB, ACMS8CB, VR6, PDS8CB	8-Doors		
<i>Managed Fuse Protected Models</i>			<i>Managed PTC Protected Models</i>			
T2RM7F8SQ	eFlow104NB, LINQ8ACM, VR6, PDS8	T2RM7F8SDQ	eFlow104NB, LINQ8ACMCB, VR6, PDS8CB			
<i>220VAC units available upon request, add suffix "V" (T1RM3F4V)</i>						



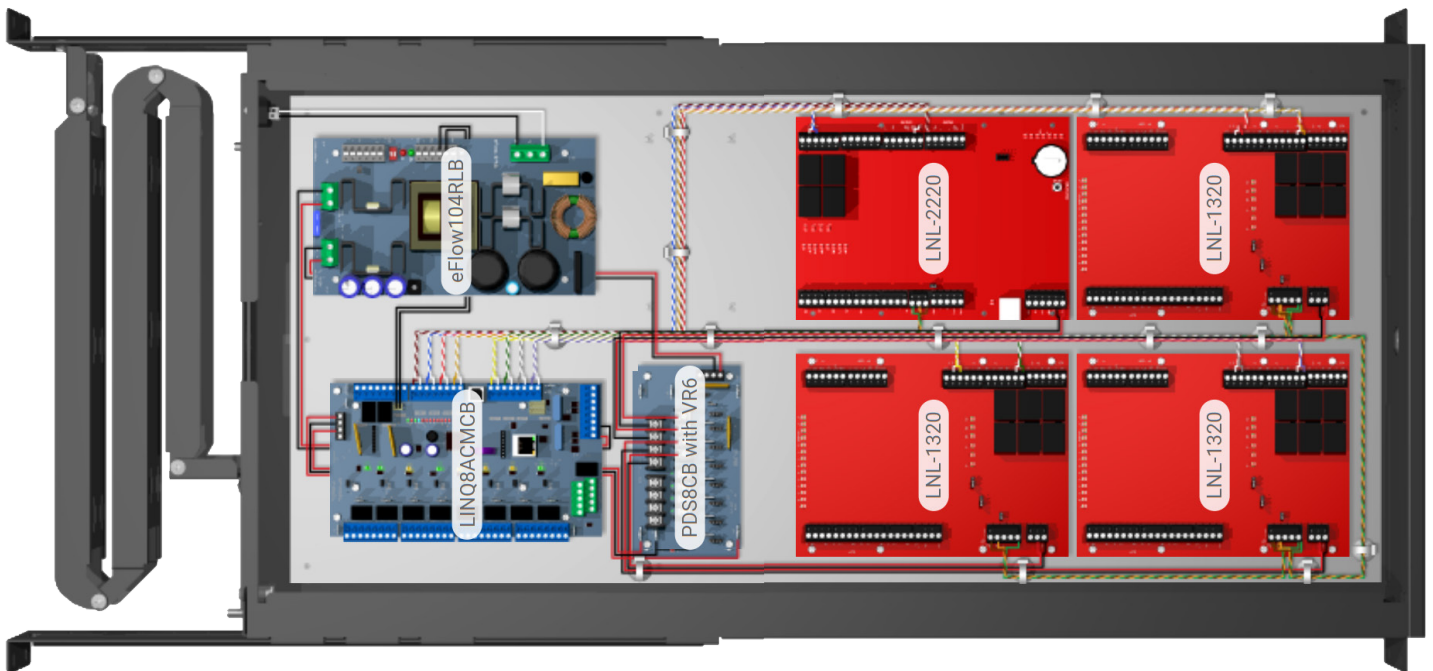
T1RM3F4
4-Door Rack Access System with Power



Optional Accessory:
- RE2 - Rack Mount Battery Enclosure (2U)
Accommodates up to four (4) 12VDC/7AH batteries

Pre-wired Rack Access and Power Integration Kits

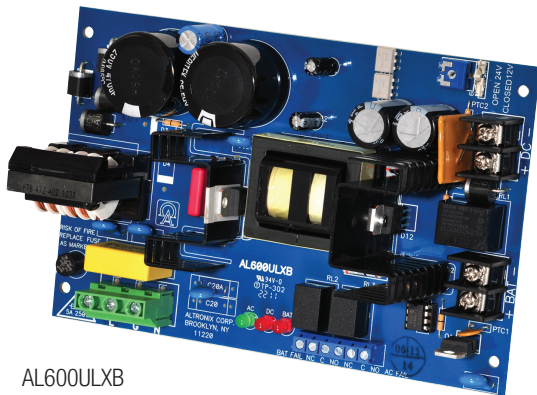
Altronix Model	Description	Altronix Model	Description	System Capacity	Compatible Mercury* Models
Trove1R 24" Series - Includes Power Distribution, Wire Assemblies for Controllers and Wire Magnets for Management					
<i>Fuse Protected Models</i>		<i>PTC Protected Models</i>		4-Doors	1-LNL-2220 and 1-LNL-1320
T1RM3CK1	Trove1M1R with eFlow6NB, ACM4, VR6, PDS8	T1RM3CK1D	Trove1M1R with eFlow6NB, ACM4CB, VR6, PDS8CB		
T1RM7CK1	Trove1M1R with eFlow104NB, ACM4, VR6, PDS8	T1RM7CK1D	Trove1M1R with eFlow104NB, ACM4CB, VR6, PDS8CB		
Trove2R 40" Series - Includes Power Distribution, Wire Assemblies for Controllers and Wire Magnets for Management					
<i>Fuse Protected Models</i>		<i>PTC Protected Models</i>		8-Doors	1-LNL-2220 and 3-LNL-1320
T2M7CK1	Trove2M2R with eFlow104NB, ACMS8, VR6, PDS8	T2M7CK1D	Trove2M2R with eFlow104NB, ACMS8CB, VR6, PDS8CB		
<i>Managed Fuse Protected Models</i>		<i>Managed PTC Protected Models</i>			
T2M7CK1Q	Trove2M2R with eFlow104NB, LINQ8ACM, VR6, PDS8	T2M7CK1DQ	Trove2M2R with eFlow104NB, LINQ8ACMCB, VR6, PDS8CB		
220VAC units available upon request, add suffix "V" (T1RM3CK1V)					



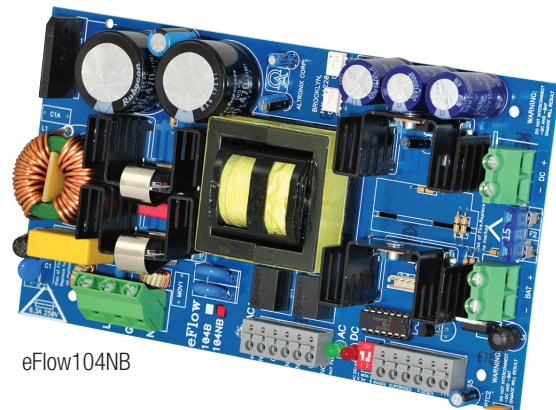
T2RM7CK1DQ
8-Door Pre-Wired Rack Access System with Power

Power Supply/Chargers for TROVE Series

Altronix Model	Altronix Model with Removable AC Terminal Block	Total Output Power	Number of Outputs	Built-in Battery Charger	Input	Dimensions (L x W x H)
ULXB Series Power Supply/Chargers						
AL400ULXB2	N/A	12VDC @ 4A or 24VDC @ 3A	1	SLA	115VAC	7.1" x 4.5" x 1.44"
AL600ULXB		12VDC or 24VDC @ 6A				7.1" x 4.5" x 2.6"
AL1012ULXB		12VDC @ 10A				7.5" x 4.5" x 2.25"
AL1024ULXB2		24VDC @ 10A				8.4" x 4.5" x 1.95"
AL400ULXB2V		12VDC @ 4A or 24VDC @ 3A			220VAC	7.1" x 4.5" x 1.44"
AL600ULXB220		12VDC or 24VDC @ 6A				7.1" x 4.5" x 2.6"
AL1012ULXB220		12VDC @ 10A				7.5" x 4.5" x 2.25"
AL1024ULXB2V		24VDC @ 10A				8.4" x 4.5" x 1.95"
eFlow Series Power Supply/Chargers						
eFlow4NB	eFlow4NTB	12VDC or 24VDC @ 4A	1 Main Output, 1Aux. Output (1A)	SLA	115VAC	7.5" x 4.6" x 1.75"
eFlow6NB	eFlow6NTB	12VDC or 24VDC @ 6A				7.5" x 4.6" x 1.75"
eFlow102NB	eFlow102NTB	12VDC @ 10A				7.5" x 4.6" x 1.75"
eFlow104NB	eFlow104NTB	24VDC @ 10A				8.25" x 4.56" x 1.75"
eFlow4NBV	eFlow4NTBV	12VDC or 24VDC @ 4A			220VAC	7.5" x 4.6" x 1.75"
eFlow6NBV	eFlow6NTBV	12VDC or 24VDC @ 6A				7.5" x 4.6" x 1.75"
eFlow102NBV	eFlow102NTBV	12VDC @ 10A				7.5" x 4.6" x 1.75"
eFlow104NBV	eFlow104NTBV	24VDC @ 10A				8.25" x 4.56" x 1.75"
Tango PoE Driven Power Supply/Charger						
Tango1B	N/A	12VDC up to 6.25A (75W) and 24VDC up to 3A (75W)	2	LiFePO4	90W 802.3bt PoE	7.625" x 4.125" x 1.25"



AL600ULXB



eFlow104NB

PoE Power Sourcing Equipment

Altronix Model	Description
NetWay1BT	Single Port 802.3bt Converter/Injector - 115/230VAC Input, 90W Output
NetWay8BT	8-Port Managed 802.3bt Midspan Injector supplies 90W per port (480W total power)

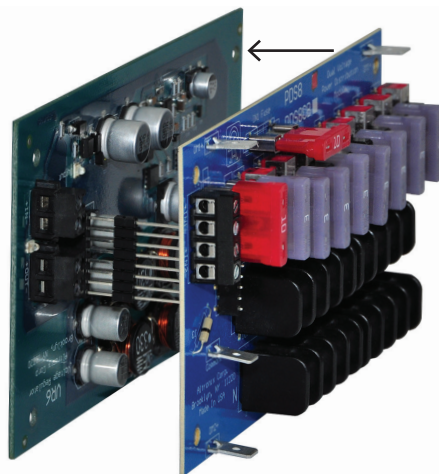


NetWay1BT



NetWay8BT

Altronix Model	Description	Number of Outputs	Dimensions
ACM4 / ACM4CB	4-Output Access Power Controller	4	5.175" x 3.36" x 1.25"
ACM8 / ACM8CB	8-Output Access Power Controller	8	8" x 4.5" 1.25"
ACMS8 / ACMS8CB	Dual Input, 8-Output Access Power Controller	8	8" x 4.5" 1.25"
ACMS8K1 / ACMS8CBK1	Dual Input, 8-Output Access Power Controller and Voltage Regulator Kit	8	8" x 4.5" 2.125"
ACMS12 / ACMS12CB	Dual Input, 12-Output Access Power Controller	12	8" x 4.5" 1.25"
LINQ8PD / LINQ8PDCB	Dual Input, 8-Output Network Power Distribution Module - Control, Monitor and report Power/Diagnostics	8	5.5" x 3.625" x 1.25"
LINQ8ACM / LINQ8ACMCB	Dual Input, 8-Output Network Power Access Power Controller - Control, Monitor and report Power/Diagnostics	8	8" x 4.5" x 1.25"
LPD	Low Power Disconnect Module (12/24VDC input)	N/A	2" x 2.75" 1"
MOM5	5-Output Power Distribution Module with Fire Alarm Interface	5	5.25" x 3.5" x 1"
NETWAY5A	5-Port Switch Board Facilitates Network Drops (10/100)	5	5.625" x 3.5" x 1"
NETWAY5B	5-Port Switch Board Facilitates Network Drops (10/100/1,000)	5	5.625" x 3.5" x 1"
NETWAY5P	5-Port Hardened PoE+ Switch Board	5	5.6" x 3.6" x 0.75"
NETWAY5PQ	5-Port Hardened Managed PoE+ Switch Board	5	5.6" x 3.6" x 0.75"
PD4UL / PD4ULCB	4-Output Power Distribution Module	4	5.21" x 3.25" x 1"
PD8UL / PD8ULCB	8-Output Power Distribution Module	8	5.21" x 3.25" x 1"
PDS8 / PDS8CB	Dual Input, 8-Output Power Distribution Module	8	5.375" x 3" x 1"
PDS8K1 / PDS8CBK1	Dual Input, 8-Output Power Distribution Module and Voltage Regulator Kit	8	5.375" x 3" x 2"
PD16W / PD16WCB	16-Output Power Distribution Module	16	5.875" x 6" x 0.95"
PDS16 / PDS16CB	Dual Input, 16-Output Power Distribution Module	16	5.375" x 3" x 1"
VR6	Stackable Voltage Regulator Converts a 24VDC input to 5VDC or 12VDC at 6A	1	5.375" x 3" x 1"
VR10	Stackable Voltage Regulator Converts a 24VDC input to 5VDC or 12VDC at 10A	1	5.375" x 3" x 1"



Stackable sub-assemblies save valuable enclosure space, allowing for more power distribution and access controllers.

Optional Accessories for TROVE Series

Altronix Model	Description	
BL3	18" Battery Leads (black and red)	
BL4	8" Battery Series Jumper (yellow)	
BL6	68" Battery Leads (black and red)	
BR1	Add-on mounting bracket. Mount additional Altronix sub-assemblies to the enclosure's side wall.	
BT126	12VDC / 7AH Rechargeable Battery	
BT1212	12VDC / 12AH Rechargeable Battery	
BTL125	Rechargeable 12V Lithium Iron Phosphate (LiFePO4) Battery	
CLK1	Thumb Lock. Fits Trove1, Trove2 and Trove3 enclosures.	
DNP1	Altronix DIN Rail Adapter Plate accommodates the following sub-assemblies: ACM4(CB), ACM8(CB), ACM8(CB), ACMS8(CB), ACMS12(CB), LINQ8PD(CB), LINQ8ACM(CB), MOM5, NETWAY5A, NETWAY5B, NETWAY5P, NETWAY5PQ, PD4UL(CB), PD8UL(CB), PDS8(CB), PDS16(CB)	
GB1	Altronix Adapter Plate for Genetec Synergis Cloud Link (For Mercury and HID/Vertx)	
MM4	Mounting Magnets. 26 lbs. holding force. Pack of 4.	
MM8	Mounting Magnets. 26 lbs. holding force. Pack of 8.	
MM12	Mounting Magnets. 26 lbs. holding force. Pack of 12.	
MM24	Mounting Magnets. 26 lbs. holding force. Pack of 24.	
PSC1	Power Supply Protective Cover (Includes standoffs)	
RSB1	Rocker Switch with Bracket - Includes single Master Power ON/OFF Switches and Wires	
RSB2	Rocker Switches with Bracket - Includes two (2) Master Power ON/OFF Switches and Wires	
SPACER1	5/8" Nylon female/female spacers (standoffs) with 6/32 screws. Pack of 25.	
SPACER3	5/8" Aluminum female/female spacers (standoffs) with 6/32 screws. Pack of 25.	
SPACER4	5/8" Nylon male/female spacers (standoffs) with 6/32 screws. Pack of 25.	
SPACER5	5/8" Nylon snap-on spacers (standoffs) with 6/32 screws. Pack of 32.	
SPACER6	1" Aluminum female/female spacers (standoffs) with 6/32 screws. Pack of 4.	
SPACER7	5/8" Aluminum male/female spacers (standoffs) with 6/32 screws. Pack of 25.	
SPACER8	1" Nylon female/female spacers (standoffs) with 6/32 screws. Pack of 4.	
SPACER9	5/8" Aluminum spacers (standoffs) with 4/40 screws. Pack of 8.	
TROVE2BWC	Wire trough/Battery enclosure compliments Trove2 enclosures to accommodate up to four (4) 12VDC/18AH batteries, or conceal side wiring (horizontal mount)	
TROVE3BWC	Wire trough/Battery enclosure compliments Trove3 enclosures to accommodate up to four (4) 12VDC/18AH batteries, or conceal wiring (horizontal mount)	
TROVE3SWC	Wire trough/Battery enclosure compliments Trove3 enclosures to accommodate up to four (4) 12VDC/40AH batteries, or conceal side wiring (vertical mount)	
WM5	Magnetic cable tie mount. Accommodates standard zip ties. 16 lbs. holding force. Pack of 5.	
WM10	Magnetic cable tie mount. Accommodates standard zip ties. 16 lbs. holding force. Pack of 10.	
WM25	Magnetic cable tie mount. Accommodates standard zip ties. 16 lbs. holding force. Pack of 25.	
WM100	Magnetic cable tie mount. Accommodates standard zip ties. 16 lbs. holding force. Pack of 100.	

BTL125

CLK1

DNP1

PSC1

RSB2

TROVE3SWC

WM5

ER INTEGRATIO GRATION ACCE CESS & POWER

